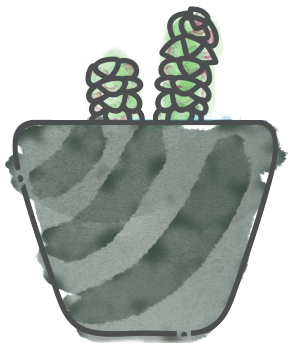


Baby Necklace

Crassula marnieriana



- Did I arrive with one of my stems beheaded? Lucky you! In just a few weeks, I'll grow two or more rosette heads in its place!
- I'm a fun little Crassula with thick green leaves lined in pink, and I'm easy to grow!
- I do great indoors in the winter, just water me once every 3 weeks. In the summer I'll need a good soak once a week.

